

BEST MANAGEMENT PRACTICES FOR EHDV VACCINATION OF FARMED DEER

UF IFAS Extension
UNIVERSITY of FLORIDA



CERVIDAE HEALTH
RESEARCH INITIATIVE

**The Cervidae
Health Research
Initiative
coordinates**

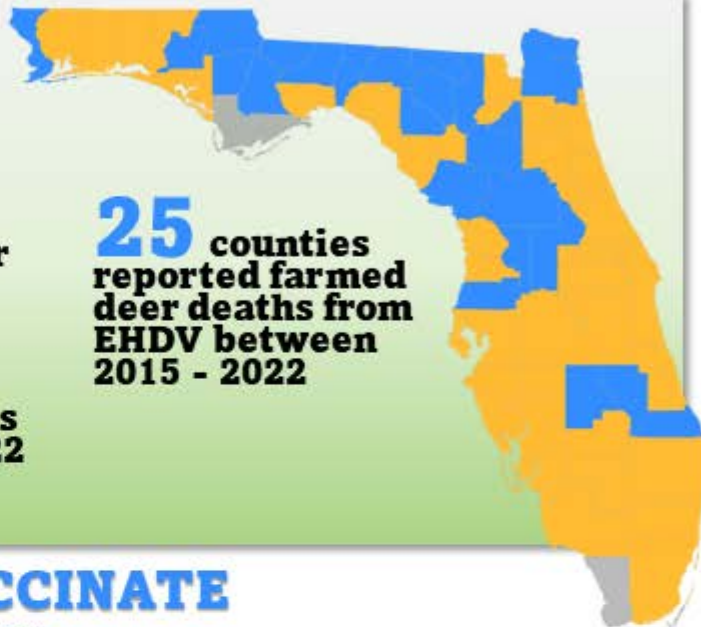
**UF/IFAS research
and Extension
activities to help
deer farmers
enhance their
herd's
productivity and
health.**

500+ deer
farms in Florida.

64 of 67
counties have deer
farms.

24% of
farmed deer deaths
between 2015 -2022
are from EHDV.

25 counties
reported farmed
deer deaths from
EHDV between
2015 - 2022



WHO TO VACCINATE

- Only healthy deer
- Fawns and yearlings, the most susceptible age groups
- Valuable does and bucks
- Animals for shipping

WHEN VACCINATE

- Fawns: ideally, ~ 4 weeks after birth; practically, during weaning
- Initial vaccination requires a booster 2-4 weeks after first dose
- Booster annually in early spring or summer
- 6 weeks prior to shipping

WHY VACCINATE

- EHDV is the #1 cause of deer deaths in Florida
- New vaccines reduce mortality by 50%

HOW TO VACCINATE

- By hand with a syringe in the neck or rump, OR by dart to the rump
- Follow the manufacturer's directions
- Always keep the vaccine refrigerated
- If giving multiple vaccine injections, use different areas of the body

wec.ifas.ufl.edu/CHeRI



@UFIFAS.CHeRI

@UF_IFAS_CHeRI

