

# BEST MANAGEMENT PRACTICES FOR EHDV VACCINATION OF FARMED DEER

**UF** | IFAS Extension  
UNIVERSITY OF FLORIDA



CERVIDAE HEALTH  
RESEARCH INITIATIVE

**The Cervidae  
Health Research  
Initiative  
coordinates**

**UF/IFAS research  
and Extension  
activities to help  
deer farmers  
enhance their  
herd's  
productivity and  
health.**

[wec.ifas.ufl.edu/CHeRI](http://wec.ifas.ufl.edu/CHeRI)



@UFIFAS.CHeRI

@UF\_IFAS\_CHeRI

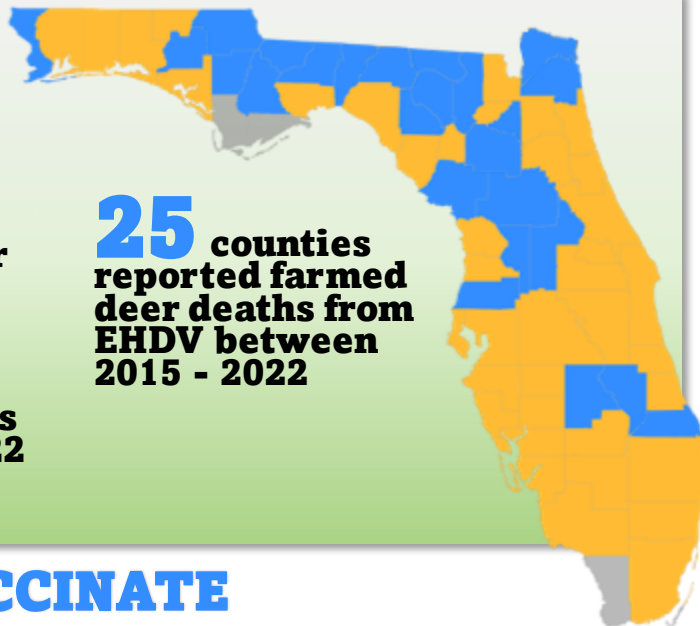


**500+** deer  
farms in Florida.

**64** of 67  
counties have deer  
farms.

**24%** of  
farmed deer deaths  
between 2015 -2022  
are from EHDV.

**25** counties  
reported farmed  
deer deaths from  
EHDV between  
2015 - 2022



## **WHO TO VACCINATE**

- Only healthy deer
- Fawns and yearlings, the most susceptible age groups
- Valuable does and bucks
- Animals for shipping

## **WHEN VACCINATE**

- Fawns: ideally, ~ 4 weeks after birth; practically, during weaning
- Initial vaccination requires a booster 2-4 weeks after first dose
- Booster annually in early spring or summer
- 6 weeks prior to shipping

## **WHY VACCINATE**

- EHDV is the #1 cause of deer deaths in Florida
- New vaccines reduce mortality by 50%

## **HOW TO VACCINATE**

- By hand with a syringe in the neck or rump, OR by dart to the rump
- Follow the manufacturer's directions
- Always keep the vaccine refrigerated
- If giving multiple vaccine injections, use different areas of the body

