



UF|IFAS
UNIVERSITY of FLORIDA

CERVIDAE HEALTH RESEARCH INITIATIVE

Volume 7, Issue 4, November 2022

Message from the Director

CHeRI is in its 7th year! In 2015, we heard your request for safe and effective vaccines for EHDV. Now that one is on the market, we are turning our attention to the next 5 years. We want to hear from you. Read below for how your voice can be heard and how you can help shape the next 5 years of research, extension, and training at CHeRI.

Thank you, always, for your support - *Sam*

Dr. Samantha Wisely
Director, CHeRI

CHeRI – the next 5 years

At the most recent SeTDA Summer Picnic, Sam Wisely gave a virtual talk on developing CHeRI's new strategic plan. We want to hear from deer farmers. What should CHeRI focus on for the next 5 years? We have heard some good suggestions already- developing mobile abattoirs, assisting in vaccine development for BTV, and understanding the breadth of resistance to our most commonly used treatments for bacterial and parasite infections.

Deer farmers and stakeholders, please fill out this [questionnaire](#) to let us know what you're interested in. The link will take you to a very brief survey where you can comment on what you'd like us to focus on.

UF IFAS 2022 Agricultural Disaster Assessment

Hurricane Ian and the unprecedented November Tropical Storm Nicole caused significant damage to many agricultural sectors across Florida. Please take time to read and fill out [this survey](#). This is a very important step in the disaster relief and recovery and UF/IFAS aims to better understand the impact of disasters and hazardous events across Florida's agricultural sectors.

SeTDA Summer Picnic!

We had a blast at the 2022 SeTDA Summer Picnic this past August! There were informational talks and interactive workshops to help Florida deer farmers stay up-to-date on nutrition, herd health, vaccination, and chemical immobilization techniques.

We always look forward to directly interacting with deer farmers and are excited for what's to come next year! See you at the 2023 SeTDA Spring Fling!



Florida deer farmers and researchers come together to discuss a variety of topics surrounding deer farming.

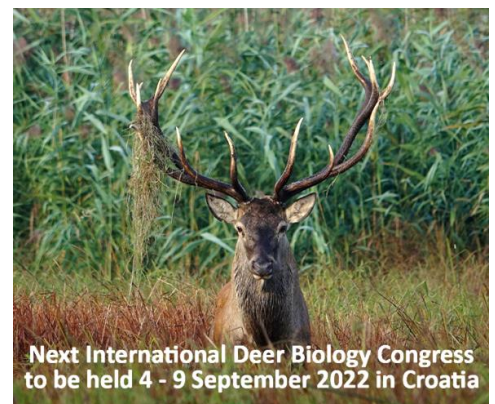


CHeRI Crew at the 2022 SeTDA Summer Picnic.

CHeRI at the International Deer Biology Congress

This past September, CHeRI students, faculty and employees headed to the International Deer Biology Congress in Croatia to network with international deer farm industry leaders and scientific fellows. It was amazing hearing the variety of deer research being done around the world.

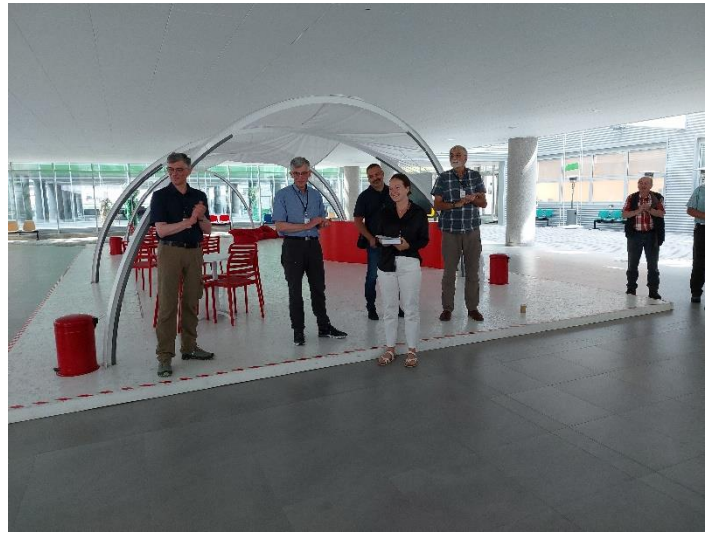
We gave four presentations and had two posters. Savannah Grace, our wonderful CHeRI PhD student, won the best presentation award! Congratulations!



Next International Deer Biology Congress to be held 4 - 9 September 2022 in Croatia



IIBC participants before the main excursion.



Savannah won the Best Presentation Award!

CHeRI Spotlights!



Rayann Dorleans

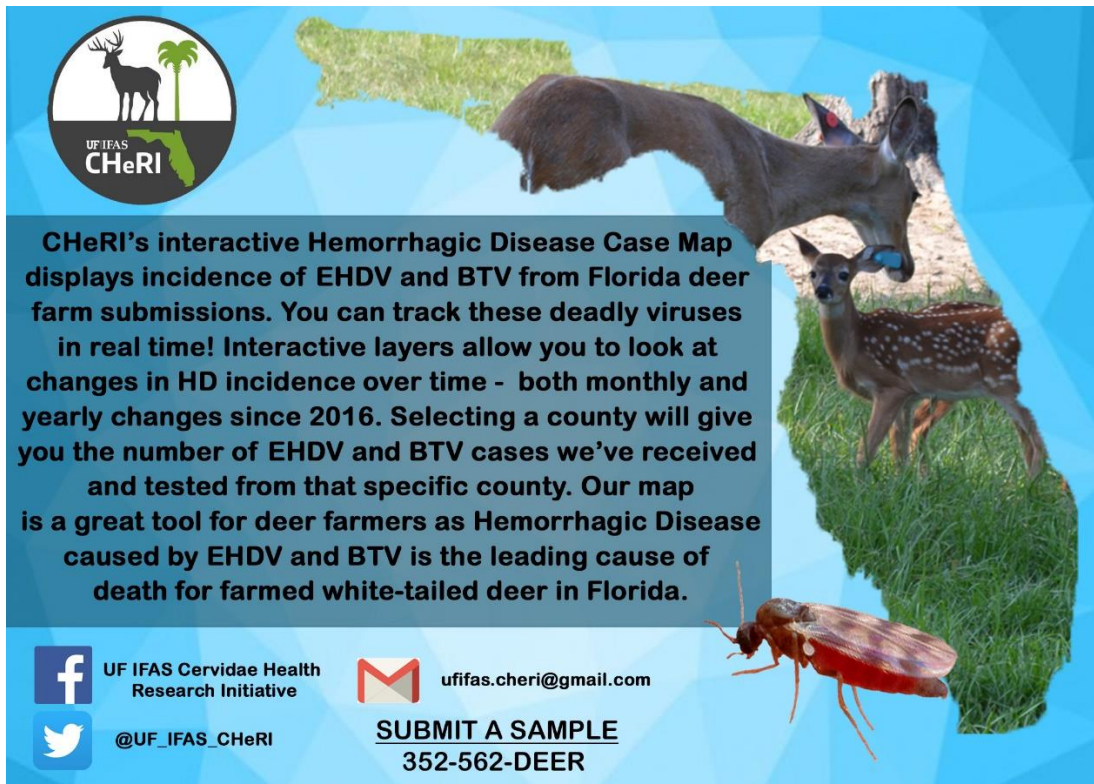
I earned my bachelor's degree in biology from the University of Florida. I began volunteering at the lab of Dr. Samantha Wisely during my freshman through junior years before being hired as a lab technician. Most of my lab work was in assisting in the research of the ecology of ticks and tickborne diseases in Florida and Swaziland. I plan to diverge from ecology and pursue my doctorate of physical therapy. I enjoy reading and weightlifting in my spare time.

As part of CHeRI I receive organ samples from the CHeRI Necropsy team. These samples are collected from farmed deer across Florida, which I extract and then screen for the presence of various diseases.


CHeRI HD Cases Dashboard Map


HD came early and is staying late this year- we still have samples coming in from across the state that are testing positive. In November alone, we've received samples from 24 cases- 22 have tested positive for EHDV, 2 have tested positive for BTV, and we have 4 animals in the queue.


For more information and to stay up to date on EHDV and BTV in Florida, please check out our interactive Hemorrhagic Disease Case Map [here](#) or click the picture below. This tool is particularly useful for planning vaccinations for animals that will be shipped.



CHeRI's interactive Hemorrhagic Disease Case Map displays incidence of EHDV and BTV from Florida deer farm submissions. You can track these deadly viruses in real time! Interactive layers allow you to look at changes in HD incidence over time - both monthly and yearly changes since 2016. Selecting a county will give you the number of EHDV and BTV cases we've received and tested from that specific county. Our map is a great tool for deer farmers as Hemorrhagic Disease caused by EHDV and BTV is the leading cause of death for farmed white-tailed deer in Florida.

 UF IFAS Cervidae Health Research Initiative

 uffas.cheri@gmail.com

 @UF_IFAS_CHeRI

SUBMIT A SAMPLE
352-562-DEER

Ship us your specimens!

Did you know that you can ship us specimens from your animals for disease testing? We accept biological samples from live and dead animals, but it's critically important that the samples are collected, stored and shipped correctly. Improperly prepared samples yield poor or no results. Call us prior to collecting specimens to determine which sample(s) to collect and how to store it. We will work with your veterinarian or your farm manager to ensure that the right sample is collected. To help facilitate the process we have updated our shipping address and requirements for sample shipment. These changes will ensure that your sample stays cold and that no cost is incurred by the shipper.

Call **352-562-3337** if you have any questions and please download this [pdf](#) and keep it for reference when sending CHeRI a specimen.

Contact Us:

Email: ufifas.cheri@gmail.com

EHD Hotline Phone: 352-562-DEER

Website: <https://wec.ifas.ufl.edu/cheri/>

Facebook: <https://www.facebook.com/UFIFAS.CHeRI/>

Twitter: [@UF_IFAS_CHeRI](https://twitter.com/UF_IFAS_CHeRI)

