



UF | IFAS
UNIVERSITY of FLORIDA

CERVIDAE HEALTH RESEARCH INITIATIVE

Volume 7, Issue 3, July 2022

Message from the Director

Fall is just around the corner, and with it comes EHDV season. Fawns and yearlings are the most susceptible to epizootic hemorrhagic disease. Getting the EHDV vaccine into fawns is challenging, but deer farmers across the country are finding ways to do it. CHeRI's extension veterinarian, Dr. Juan Campos, works with Florida deer farmers to help them figure out the best strategy for vaccination on their farm. You can find Dr. Campos this August at the SETDA Summer Picnic or contact him directly to schedule a farm visit or phone consultation.

Thank you, always, for your support - *Sam*

Dr. Samantha Wisely
Director, CHeRI

See you at the SETDA Summer Picnic!

Join us for the workshop, Deer Farming in Florida. This event is organized by UF IFAS Cervidae Health Research Initiative (CHeRI) and will take place during the Southeast Trophy Deer Association Summer Picnic. Deer farming is one of the fastest growing industries in rural North America and Florida. This workshop aims to assist new and established deer farmers improve their productivity and animal health. In this workshop, we will cover important topics such as nutrition, herd health, vaccination, and chemical immobilization.

Mark your calendar!

When: August 13th, 2022

Where: Austin Cary Learning Center

10625 NE Waldo Road

Gainesville, FL 32609

Register here starting Monday, July 18th:

<https://www.eventbrite.com/e/deer-farming-in-florida-workshop-tickets-385849946577>

CHeRI is going to the International Deer Biology Congress



CHeRI students, faculty and employees will be heading to the International Deer Biology Congress in Croatia this fall to network with international deer farm industry leaders and scientific fellows. We will use this opportunity to connect with other deer farmers from New Zealand, Hungary, Serbia, and Argentina to learn about new technologies, management and research on cervids across the globe.

Don't forget to vaccinate your herd against EHDV

EHDV is the primary killer of farmed deer. Yearlings are an important age group to vaccinate and can be vaccinated in the spring. Animals that are to be shipped are another important group to vaccinate, particularly for those farms shipping from south Florida to North Florida where EHDV is more prevalent. Always use vaccines according to the label. Here are some important tips for vaccinations.

BEST MANAGEMENT PRACTICES FOR EHDV VACCINATION OF FARMED DEER

UF IFAS Extension
UNIVERSITY OF FLORIDA

CERVIDAE HEALTH RESEARCH INITIATIVE

The Cervidae Health Research Initiative coordinates UF/IFAS research and Extension activities to help deer farmers enhance their herd's productivity and health.

wec.ifas.ufl.edu/CHeRI

@UFIFAS_CHeRI
@UF_IFAS_CHeRI

500+ deer farms in Florida.

64 of 67 counties have deer farms.

24% of farmed deer deaths between 2015 -2022 are from EHDV.

25 counties reported farmed deer deaths from EHDV between 2015 - 2022

WHO TO VACCINATE

- Only healthy deer
- Fawns and yearlings, the most susceptible age groups
- Valuable does and bucks
- Animals for shipping

WHEN VACCINATE

- Fawns: ideally, ~ 4 weeks after birth; practically, during weaning
- Initial vaccination requires a booster 2-4 weeks after first dose
- Booster annually in early spring or summer
- 6 weeks prior to shipping

WHY VACCINATE

- EHDV is the #1 cause of deer deaths in Florida
- New vaccines reduce mortality by 50%

HOW TO VACCINATE

- By hand with a syringe in the neck or rump, OR by dart to the rump
- Follow the manufacturer's directions
- Always keep the vaccine refrigerated
- If giving multiple vaccine injections, use different areas of the body

Updated July 2022

CHeRI Spotlights! – Meet the new necropsy crew!

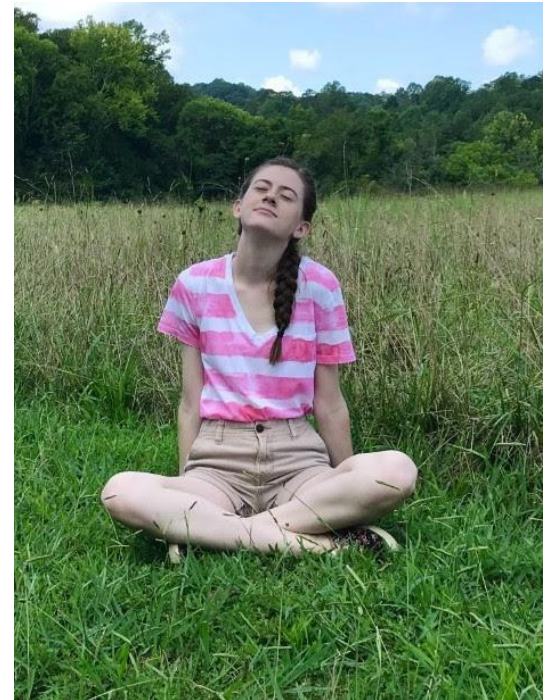


Sarah O. Meisner

I graduated from the SUNY College of Environmental Science and Forestry with a bachelor's in wildlife science. I plan to enroll in the University of Florida's wildlife forensics and conservation master's program next fall. My career interests consist of going into wildlife forensic pathology. When I am not in the lab or conducting field necropsies, I've likely found a new birding spot, coffee shop, or farmers market to explore, possibly with a paper on emerging diseases in hand. I enjoy working with various groups to relay the concerns that wildlife diseases pose. With CHeRI, I conduct field necropsies to help farmers become aware of the diseases affecting their cervids. I truly love collaborative research, and it has been fascinating to witness how interdisciplinary the work being conducted by CHeRI is.

Megan Cox

I graduated from the University of Tennessee, Knoxville with a Bachelor of Animal Science. I've worked in a variety of settings, including my local zoo, teaching farm, and veterinary wellness clinic. I'm interested in wildlife epidemiology and disease ecology. In my free time, I enjoy visiting museums, seeing live shows, and drawing. I would love for my future to be devoted to studying and characterizing diseases and their transmission. My work consists of performing necropsies on Florida's farm deer. Through the analysis of samples from deceased deer, we can help determine cause of death and inform farmers on how to prevent further disease. I love that this job expands the knowledge of deer diseases in a way that is applicable to the farm deer as well as their wild counterparts. Through a One Health perspective, we can use lessons from different populations to protect others that are interconnected.



CHeRI UF VetMed Student Intern

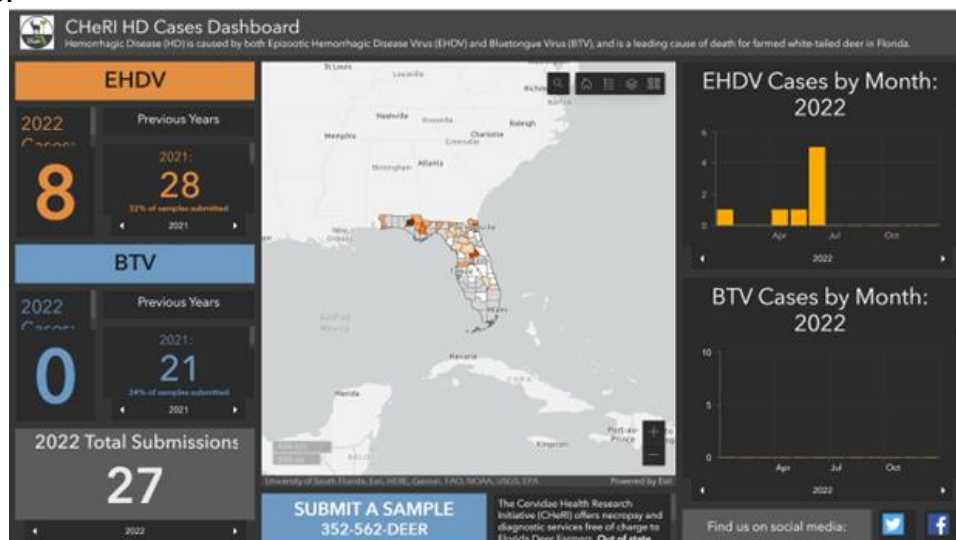


CHeRI is committed to training the next generation of veterinarians in cervid health. Each summer we have a veterinary student volunteer with our labs to make that student more familiar with clinical research on deer and the deer farming industry in Florida.

Meet Laura Roldan, a first-year veterinary student at UFCVM. As an aspiring wildlife veterinarian, she always is looking for ways to combine her passion for vet med and conservation. She found Dr. Juan Campos and CHeRI while looking to join a research project. She's working alongside CHeRI this summer, conducting research on Deer Pox Virus. During her free time, she fulfills her childhood dreams of running away with the circus and does trapeze and lyra!

CHeRI HD Cases Dashboard Map

Check out our interactive HD Cases Dashboard Map! You can click on different years to see changes in BTV and EHDV cases we've seen in Florida. You can see by county, by year, and can even check out the monthly variability with a year. We are already seeing positive animals within the first half of 2022. This tool is particularly useful for planning vaccinations for animals that will be shipped. Click [here](#) to see more.



Ship us your specimens!

Did you know that you can ship us specimens from your animals for disease testing? We accept biological samples from live and dead animals, but its critically important that the samples are collected, stored and shipped correctly. Improperly prepared samples yield poor or no results. Call us prior to collecting specimens to determine which sample to collect and how to store it. We will work with your veterinarian or your farm manager to ensure that the right sample is collected. To help facilitate the process we have updated our shipping address and requirements for sample shipment. These changes will ensure that your sample stays cold and that no cost is incurred by the shipper. Call 352-562-3337 if you have any questions and please download this [pdf](#) and keep it for reference when sending CHeRI a specimen.

Contact Us:

Email: ufifas.cheri@gmail.com

EHD Hotline Phone: 352-562-DEER

Website: <https://wec.ifas.ufl.edu/cheri/>

Facebook: <https://www.facebook.com/UFIFAS.CHeRI/>

Twitter: [@UF_IFAS_CHeRI](https://twitter.com/UF_IFAS_CHeRI)

