



# CERVIDAE HEALTH RESEARCH INITIATIVE

Volume 6, Issue 2, July 2021

## Message from the Director

Tropical Storm Elsa brought flooding to many deer farms. Just as things are drying out, we are now seeing a spike in hemorrhagic disease cases. CHeRI researchers are working to better predict how dramatic weather events affect disease outbreaks in deer. In the meantime, the CHeRI webpage has great information on best vaccination practices, a link to our HD case dashboard, and other information about making your farm healthier and more productive. Check it out [here](#).

Thank you, always, for your support - *Sam*

Dr. Samantha Wisely  
Director, CHeRI

**2021 SETDA SUMMER PICNIC**  
Mark Your Calendars

**SATURDAY AUGUST 7**

**10 AM-2 PM**

CHeRI to host Educational Seminars with SETDA Summer BBQ Lunch

SETDA SUMMER PICNIC SCHEDULE INCLUDES:  
LUNCH: BBQ LUNCH INCLUDED  
SEMINARS: GREAT EDUCATIONAL SEMINARS IN THE A.M. & AFTER LUNCH

+ DOOR PRIZES & RAFFLE TICKETS  
+ ELECTIONS FOR NEW BOARD OF DIRECTORS  
+ UPDATES FROM FWC & FDACS!

[www.SouthEastTrophyDeerAssociation.com](http://www.SouthEastTrophyDeerAssociation.com)

**LOCATION OF EVENTS**  
AUSTIN CARY FOREST  
10625 NE WALDO RD. | GAINESVILLE, FL 32609

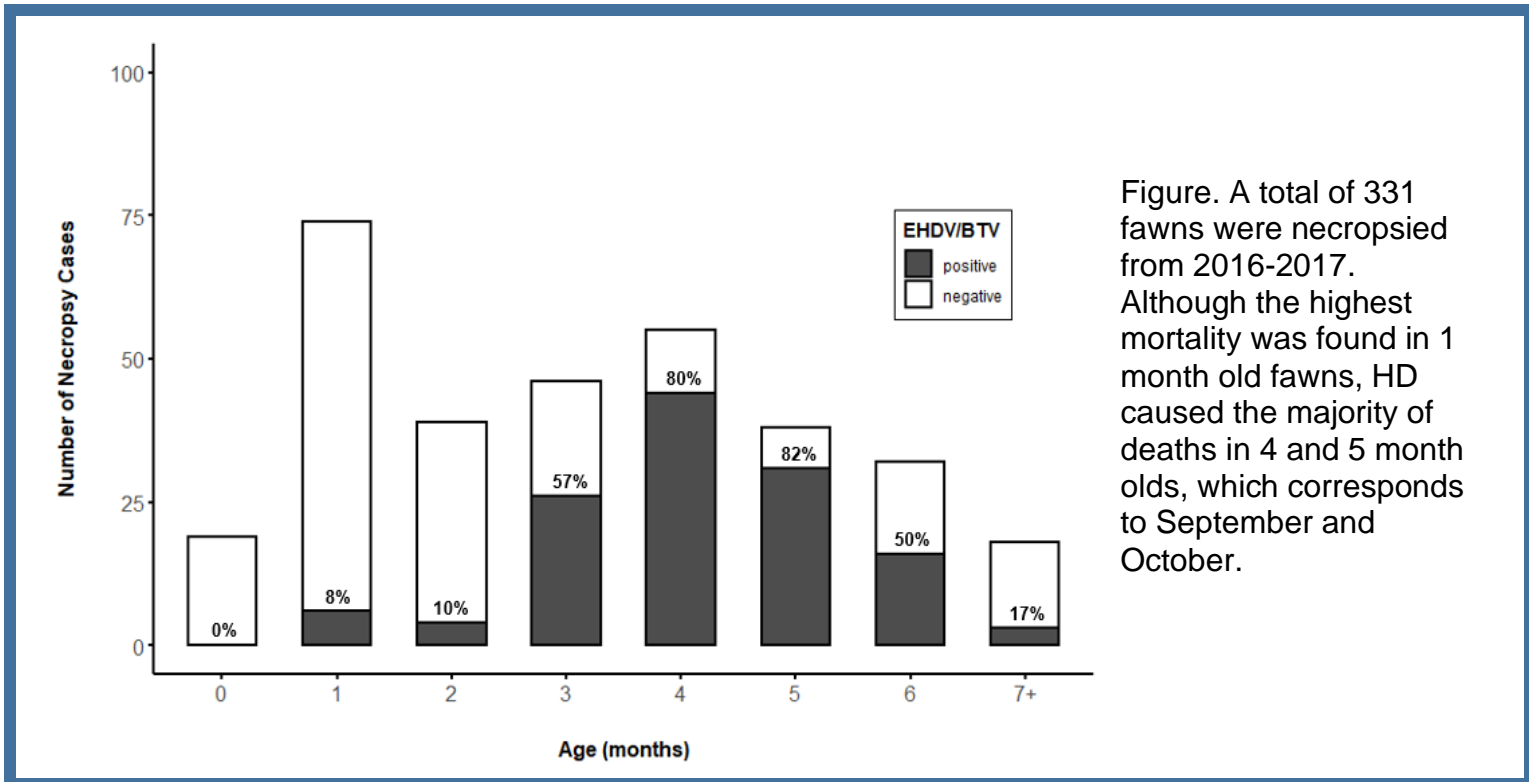
## See you at the SETDA Summer Picnic!

CHeRI is helping to host the Southeast Trophy Deer Association Summer Picnic on Saturday, August 7th at the [UF/IFAS Austin Cary Forest Learning Center](#). CHeRI has organized educational seminars on fawn weaning and vaccination, as well as wildlife friendly forages for preserves and farmed deer. Seminars will be presented by CHeRI director, Dr. Sam Wisely, CHeRI veterinarian Dr. Juan Campos, and CHeRI affiliate scientist Dr. Marcelo Wallau. We hope to see you there!

## New data hot off the press

Dr. Juan Campos and his team have been running the necropsy and diagnostic services for CHeRI since 2016. This year they have compiled the anonymous data and published it in the journal, *Viruses*. Take a look at the article [here](#). In the meantime, here is a summary of research:

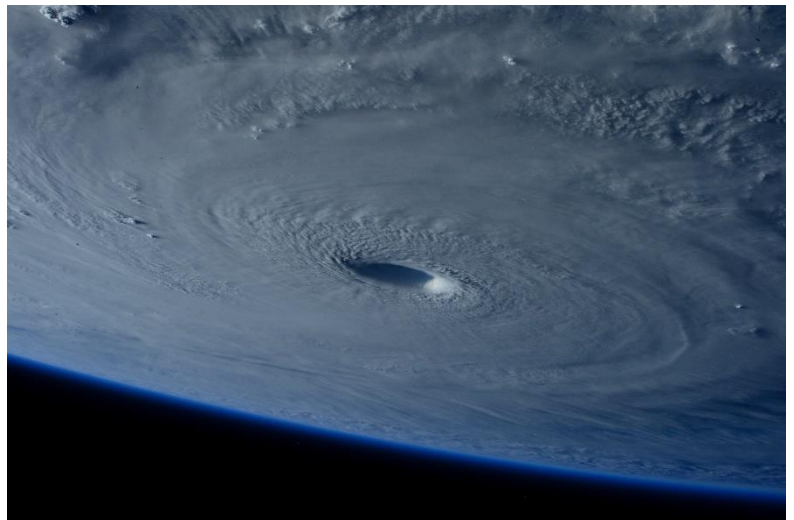
- Data were collected from 539 deceased white-tailed deer from 2016-2020
- 44% of deer died from either BTV or EHDV (collectively, HD)
- 30% of deaths were from EHDV-1, -2, or -6.
- 56% of yearling deaths were due to HD
- 80% of 4-5 month old fawn deaths were due to HD



## Hurricane Season

June 1st was the official start of the 2021 Atlantic Hurricane season. With one tropical storm under our belt, this season is expected to be very active so the sooner we all can be prepared the better. Multiple resources are available:

- Dr. Laurie Cook, DVM, president of SeTDA and a fellow deer farmer, wrote a document on [hurricane preparedness aimed at deer farmers](#).
- UF/IFAS has a great disaster preparedness web portal [here](#)
- NOAA also has great resources, which you can check out [here](#).



# Preparing for HD season

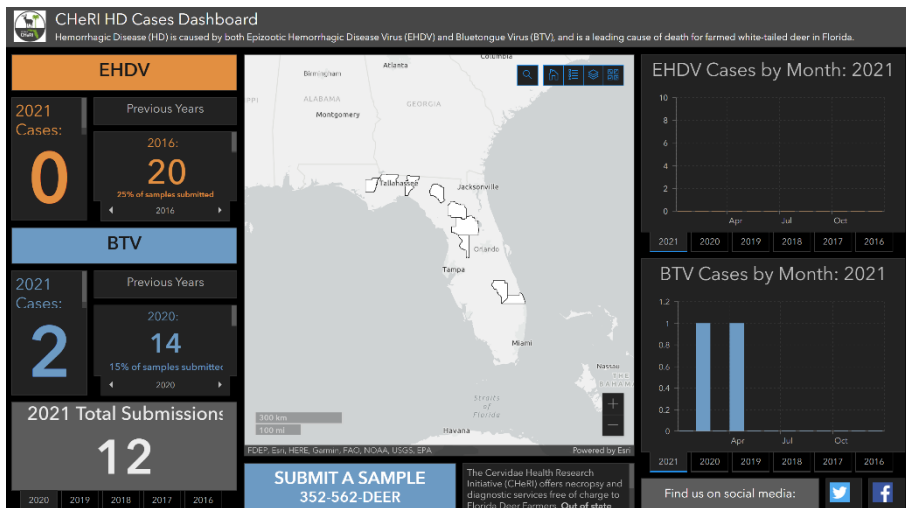
Hemorrhagic Disease (HD) season has started early this year. Help protect your deer by vaccinating them against EHDV. 30% of farmed deer deaths are due to EHDV. Your herd's health is our top priority. Check out our infographic on best vaccination practices [here](#).



**Medgene Labs is offering an end of the season sale with 50% off their EHDV vaccines.** Orders need to be placed by August 9<sup>th</sup>. Contact Ashley Petersen at 605-692-1268 or [ashley@medgenelabs.com](mailto:ashley@medgenelabs.com)

# Interactive CHeRI Hemorrhagic Disease Dashboard Map

Stay up-to-date this HD season! Our interactive HD Case Map displays incidence of EHDV and BTV from Florida deer farm submissions. You can track these deadly viruses in real time! Interactive layers allow you to look at changes in HD incidence over time- both monthly and yearly changes since 2016. Selecting a county will give you the number of EHDV and BTV cases we've received and tested from that specific a great tool HD caused by the leading farmed white-tailed Florida. Click



county. Our map is for deer farmers as EHDV and BTV is cause of death for tailed deer in [here](#) to check it out!

In addition to our dashboard, we have a variety of additional online resources at your disposal. From information on wildlife management plans to legal aspects of deer farming, CHeRI and UF|IFAS have numerous articles to read. We've compiled those relevant to deer farming in one [convenient location on our website](#). Check them out when you get a chance!

## Contact Us:

Email: [ufifas.cheri@gmail.com](mailto:ufifas.cheri@gmail.com)

EHD Hotline Phone: 352-562-DEER

Website: <https://wec.ifas.ufl.edu/cheri/>

Facebook: <https://www.facebook.com/UFIFAS.CHeRI/>

Twitter: [@UF\\_IFAS\\_CHeRI](https://twitter.com/UF_IFAS_CHeRI)

